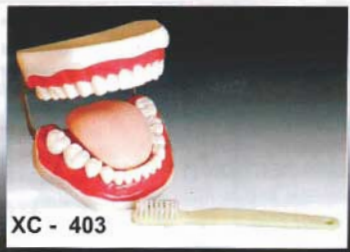


IMPORTED HUMAN MODELS



XC-403

TOOTH HYGIENE SET - CONSISTS OF TEETH, TONGUE AND PALATE WITH BRUSH

This model is to serve for demonstration in mouth protection and relative clinical teaching. Consists of gum, teeth, tongue and palate. It demonstrates teeth form and oral cavity cleaning and protection.

Rs. 1450/-

PEA - 150

MID MAGNIFIED TONGUE MODEL

This 3-part model of the tongue shows the lower jaw which is removable, the tongue with the mouth floor musculature in median section and its nerves and blood supply. It also shows the sublingual and submandibular gland. On base.

Rs. 1250/-



XC - 305



XC-305

EXPANSION MODEL OF HUMAN TEETH

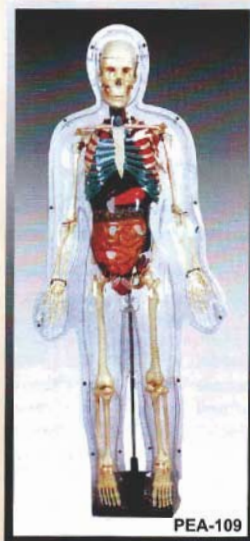
This model shows the morphological differences of the incisor, canine and molar teeth. Dissections of the canine and molar teeth demonstrate the structure of the enamel, dental pulp cavity. Enlarged 12 times, 3 pcs / set, the model is made of PVC plastic.

Rs. 1850/-

PEA-161

MODEL OF HUMAN TEETH NATURAL-SIZE (32 PCS)

Rs. 1770/-



PEA-109

MODEL OF TRANSPARENT HUMAN (TALL 85 CM)

Consists an entire skeleton same as XC-102. The internal organs: lung, heart, stomach, intestine, kidney, bladder etc. are removable. The outer layer is made of rigid plastic and is dissectible into front and rear pieces which can be remounted. On stand with metal base.

Rs. 5550/-

XC-502

DELUXE ACUPUNCTURE MODEL (TALL 84 CM)

Highly illustrated and detailed, this colourful plastic model depicts 14 primary channel, 361 acupoints and 48 extraordinary acupoints on the right side, along with "CUN" markers for easy evaluation of distances between points. The left side is a subcutaneous view providing an valuable look at the neural distribution, artery, vein, upper and lower extremity "Extra" points not located on the primary channels. Suitable for teaching and learning of acupuncture and massage etc. on base.

Rs. 4100/-



XC - 502