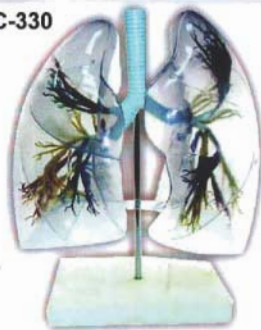


IMPORTED HUMAN MODELS

XC-330



XC - 330

MODEL OF THE TRANSPARENT LUNG SEGMENT

Rs. 2960/-

This model presents 10 segments in the right lung and 8 in the left. The distributions of the bronchial tree can be observed through the transparent lungs.

- Right Lung:** right upper lobe (3 segments), right middle lobe (2 segments), right inferior lobe (5 segments).
- Left Lung:** left upper lobe (4 segments), left inferior lobe (4 segments).
- Distribution of the bronchial tree:** right bronchus, left bronchus.
- Hilus of lung.**

The lungs are made of transparent plastic. The trachea and bronchial tree made of PVC plastic. Enlarged 2 times.

XC - 301

MAGNIFIED HUMAN LARYNX MODEL

Rs. 770/-

A functional model that demonstrates movements of the epiglottis and cartilages in the voice box. It helps the students to require an understanding of the morphology and structure of the respiratory tract and phonetic organ. On base. 3 times enlarged. 3-parts dissectible.



XC-301

XC - 302

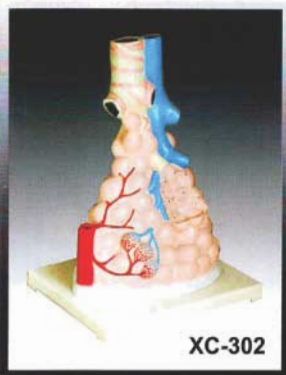
MAGNIFIED PULMONARY ALVEOLI MODEL

Rs. 1140/-

A model shows the small branches of principal bronchus:

- Section of bronchiole of no cartilage.
- The relation between pulmonary alveoli & terminal bronchiole.
- The structure of alveolar sac and alveolar duct.
- The capillary rete in the alveolar septa.

Made of PVC plastic and mounted on base.



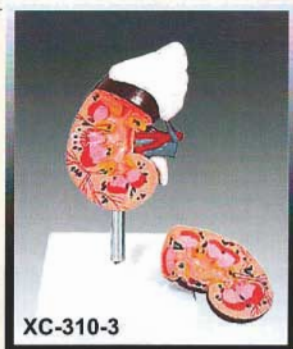
XC-302

XC - 310-3

HUMAN KIDNEY WITH ADRENAL GLAND

Rs. 890/-

The detailed life-size model features the kidney, adrenal gland, renal and adrenal vessels and upper portion of the ureter. Dissectible into 2 parts to reveal the cortex medulla, cortex vessels and renal pelvis. Model can be removed from the stand for instructions. Life - size. Mounted on stand.



XC-310-3

XC - 310-1 KIDNEY MODEL (1PART)

Rs. 1550/-

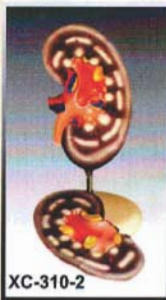
XC - 310-2 KIDNEY MODEL (2PART)

Rs. 1650/-

The coronary section of the right kidney shows the renal hilus, renal blood vessels, ureter, renal pelvis of the kidney the renal substance is demonstrated by its medulla and cortex, medullary pyramid, papillae etc. Made of PVC plastic, 2 times enlarged. Mounted on stand.



XC-310-1



XC-310-2