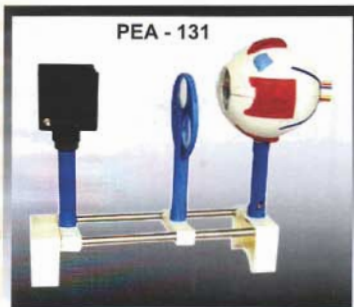


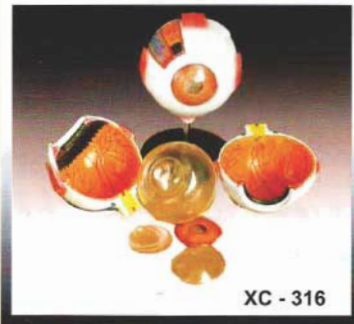
# IMPORTED HUMAN MODELS



PEA - 131

## PEA-131 Rs. 3250/- MODEL OF HUMAN FUNCTIONAL EYE

An excellent type to study the functions of the human eye. The eyeball has a horizon cut, the upper half of eyeball wall and the inner structures can be removed. With the flexible lens, the model can focus an image on the retina, demonstrates far and short sight and their corrections, needs battery.



XC - 316

## XC-313 Rs. 1300/- SKIN MODEL ENLARGED

A greatly enlarged (105 times) cross sectional view of the human skin showing three layers and a close-up view of a hair follicle, sweat gland, fatty tissue and more. Front, side and back view. Made of PVC plastic. Mounted on base.



XC - 313

## XC-316 Rs. 1250/- GIANT EYE MODEL

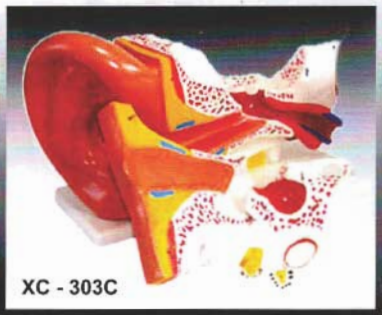
The different parts of the eyeball model are detachable to show the following structures:-  
 1. Tunica externa: showing cornea and sclera with attachments of ocular muscles and optic nerve.  
 2. Tunica media: showing the iris, the ciliary body and the chorioid.  
 3. Tunica interna: retina.  
 4. Refraction media: showing the lens and the vitreous body.  
 The model is made of PVC plastic. Mounted on stand, 6 times enlarged.

## XC - 303C Rs. 1380/- GIANT EAR MODEL NEW STYLE

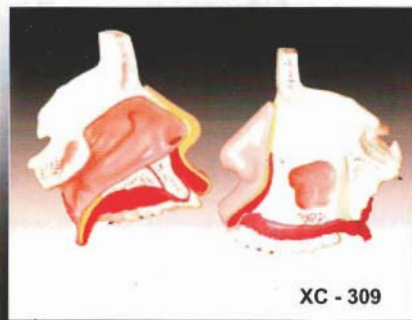
A giant model of the ear, shows the three main structural parts of the hearing organ (external ear, middle ear, internal ear) and the position of the equilibrium organ of human body.

- External Ear** : Showing the shape of the auricle and the primary features of the external auditory meatus.
- Middle Ear** : Showing the tympanic membrane, the three auditory ossicles (hammer, anvil, stirrup) and the eustachian tube.
- Internal Ear** : Showing the vestibule, cochlea and the three semicircular canals of the osseous labyrinth.

Made of PVC plastic. Mounted on plastic base. 5 times enlarged. Dissected into 6 parts.



XC - 303C



XC - 309

## XC - 309 Rs. 820/- NASAL CAVITY MODEL

This model helps the students to understand the external and internal structures of the nasal cavity.

- External Nose** : Show the section of the nasal bones and cartilages.
- Nasal Cavity** : On the lateral nasal wall show the superior, middle and inferior nasal conchae project medially into the nasal cavity forming the superior, middle and inferior nasal meatuses.
- Paranasal Sinuses** : Shows the frontal, sphenoid and maxillary sinuses. Magnified 1/2 the natural size. Made of PVC plastic.