



XC-204

XC - 204

**UNISEX TORSO 23 PARTS
(TALL 85 CM)**

This outstanding torso features an exposed spine with removable vertebra and spinal cord segments, a female breast plate and interchangeable male and female genitalia. The female organs include a fetus in the womb. Dissectible into 23 parts: torso, female breast plate, head, eyeball, brain, vertebra spinal nerves, lung (2 parts), heart (2 parts), liver, kidney, stomach (2 parts), intestines (4 parts), male genitalia (2 parts), female genitalia with fetus (3 parts). Made of PVC plastic. Mounted on base.

Rs. 9350/-

XC - 205

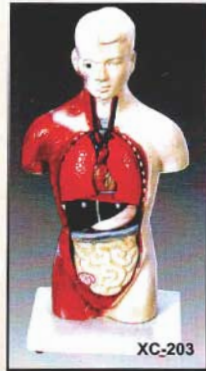
Rs. 4250/-

UNISEX TORSO 23 PARTS (TALL 45 CM)

This unisex torso features the same as XC-205 but the half size, offering an outstanding educational value. Dissectible into 23 part: torso, female breast plate, head, eyeball, brain, vertebra spinal nerves, lung (2 parts), heart (2 parts), liver, kidney, stomach (2parts), intestines (4 parts), male genitalia (2parts), female genitalia with (3 parts). Made of PVC plastic. Mounted on base.



XC-205



XC-203

XC - 203

Rs. 2275/-

**TORSO 15 PARTS
(TALL 26CM)**

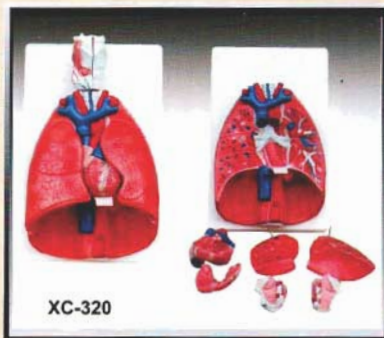
This torso features: torso, brain (2 parts), cut calvarium, heart, lung (4 parts), stomach, diaphragm, liver, heart, trachea & esophagus & aorta, pancreas and spleen, intestine etc. Dissectible into 15 parts. Made of PVC plastic. Mounted on base.

XC - 320

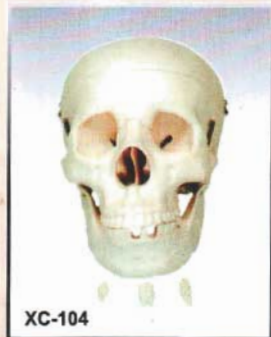
Rs. 3370/-

LARYNX, HEART AND LUNGS MODEL

A life-size model separating into 7 parts. The lungs have two removable lobes to show the internal structures, the heart bisects showing atria, ventricles and valves, the larynx bisects and the diaphragm is shown. On base. Size: 36x23x12 cm.



XC-320



XC-104

**XC - 104 Rs. 1300/-
ADULT SKULL
LIFE SIZE**

A life-size adult PVC plastic skull features a movable jaw, cut calvarium, surface lines and 3 removable lower teeth-incisor, cuspid and molar. Dissectible into 3 parts. Size 19x15x21 cm

PEA - 121

Rs. 1590/-

FETAL CHILD SKULL

This Fetal Skull is detailed to show the major structure of the different bones of the skull. The mandible is spring hanged to view the bone structures of the mouth. This model is lifelike and made PVC plastic. size: 10x8x10cm



PEA-121