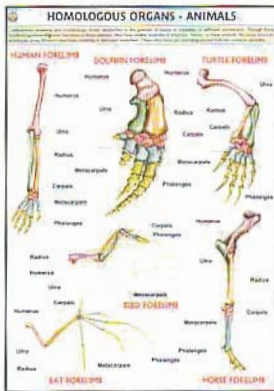
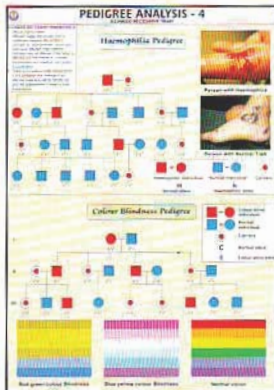


GENETICS AND EVOLUTION CHARTS

Printed on Polyart Synthetic Paper. Size 70 x 100 cm. Price Rs. 225.00 Each

- GE01S. Pedigree Analysis - 1:** showing standard symbols used in Pedigree Analysis and Sample Pedigree.
- GE02S. Pedigree Analysis - 2:** showing Autosomal Dominant Trait Pedigree such as Myotonic Dystrophy and Tongue Curler Pedigree.
- GE03S. Pedigree Analysis - 3:** showing Autosomal Recessive Trait Pedigree such as Inheritance of Attached Ear Lobe and Inheritance of Sickle Cell Anaemia.
- GE04S. Pedigree Analysis - 4:** showing X-linked Recessive Trait Pedigree such as Haemophilia and Colour Blindness Pedigree.
- GE05S. Pedigree Analysis - 5:** showing X-linked Dominant Trait Pedigree such as Hypophosphatemia and Droopy Eyelids Pedigree.
- GE06S. Pedigree Analysis - 6:** showing Y-linked Trait - Hairy Ear and Mitochondrial Inheritance Pedigree.
- GE07S. Homologous Organs - Animals:** showing Forelimbs of Bat, Turtle, Horse, Human, Bird and Dolphin demonstrating Homology.
- GE08S. Analogous Organs - Animals:** showing Wings of Bird, Butterfly, Pterosaur and Bat demonstrating Analogy.
- GE09S. Homologous Organs - Plants:** showing thorn of Bougainvillea, tendrils of Cucurbita, fleshy cylindrical stem of Euphorbia, fleshy flattened stem of Opuntia, leafy shoots of Chrysanthernum and pineapple representing Plant Homology.
- GE10S. Analogous Organs - Plants:** showing thorn of Pyracantha, spine of Berberis vulgaris, prickles of Prosopis grandulosa and stipular spines of Black Locust representing Plant Analogy.
- GE11S. Hybridisation - 1 (Monohybrid Cross):** Cross between Purple coloured and White coloured flower Pea Plant demonstrating inheritance of one dominant character and expression of recessive parental trait without blending in F2 generation.
- GE12S. Hybridisation - 2 (Dihybrid Cross):** Cross between Pea plants differing in two traits (pod colour & plant height) showing segregation of one pair of character is independent of the other pair of characters.
- GE13S. Hybridisation - 3 (Incomplete Dominance):** Cross between true breeding Red and White Snapdragon flower plants showing one character is not completely dominant over other.



CHARTS ON AIDS

Printed on Polyart Synthetic Paper. Size 70 x 100 cm. Price Rs. 225.00 Each

- AS01S. HIV:** showing structure and mechanism of infection of Human Immunodeficiency Virus
- AS02S. Transmission of HIV:** explaining different ways which can spread the HIV infection and cause AIDS.
- AS03S. Prevention:** showing various measures which, when adopted, prevent transmission of HIV infection.
- AS04S. How AIDS is not transmitted:** showing various routine tasks which are not involved in transmission of HIV.
- AS05S. Progress of Infection:** showing how HIV infection typically progresses through various stages.
- AS06S. Opportunistic Diseases:** depicting complications which an AIDS patient develops that otherwise wouldn't normally occur in a person with a healthy immune system.
- AS07S. Sexually Transmitted Diseases:** showing various sexually transmitted diseases which increase the chances of acquiring HIV infection by an individual when exposed to the virus.
- HP26S. Human Immune System:** showing different organs involved in a healthy immune mechanism. As AIDS progressively weakens the immune system, chart gives an outline of functions of Immune System to better understand what AIDS can do.

